

Runway Closures at Glacier Park International Airport



The **primary runway*** at Glacier Park International Airport will be closed for rehabilitation three days each week in August of 2009. The runway will operate normally on weekends.

August 2009

	Sunday	Monday	Tuesday	Wednesday	Thursday	Friday	Saturday						
						OPEN	01						
OPEN	02	OPEN until 10pm	03	CLOSED	04	CLOSED	05	CLOSED	06	OPEN from 9am	07	OPEN	08
OPEN	09	OPEN until 10pm	10	CLOSED	11	CLOSED	12	CLOSED	13	OPEN from 9am	14	OPEN	15
OPEN	16	OPEN until 10pm	17	CLOSED	18	CLOSED	19	CLOSED	20	OPEN from 9am	21	OPEN	22
OPEN	23	OPEN until 10pm	24	CLOSED	25	CLOSED	26	CLOSED	27	OPEN from 9am	28	OPEN	29
OPEN	30	OPEN	31										

"We have been asked why August and not May or September when there are fewer visitors to the area," Cindi Martin, airport director said. "It is a matter of the 24-hour air temperature, the likelihood of rain fall, and FAA funding schedules. Laying asphalt requires air temperatures of 45 degrees Fahrenheit and rising, and it is best done when the ground is not wet. In our extensive studies of the weather patterns, the month of August is the best time with the highest likelihood of optimal conditions."

Why do this at all? Martin says, "The airport's primary runway is safe, but the surface needs to be rehabilitated now to keep it that way. It is routine maintenance, something that must be done every 18 to 20 years to maintain the integrity of the runway landing surface. We intend to get it done before there is reason to be concerned because safety is our top priority."

*The secondary runway 12-30 will remain during August except during Phase 3. This is a 3504 X 75 foot runway.

Please schedule your August 2009 business and leisure travel with these dates in mind! For more information, and to view pictures of our progress, please visit

iFlyGlacier.com

07354

AIRPORT DIAGRAM

AL-887 (FAA)

KALISPELL/GLACIER PARK INTL (GPI)
KALISPELL, MONTANA

ATIS 132.625
GLACIER TOWER*
124.55
GND CON
121.6

RWY 2-20
S80, D170, ST175, DT250
RWY 12-30
S12

FIELD
ELEV
2977

ELEV
2976

ELEV
2973
120.6°

199.1°

48°19'N

CONTROL
TOWER
3074

NW-1, 02 JUL 2009 to 30 JUL 2009

NW-1, 02 JUL 2009 to 30 JUL 2009

3504 X 75

300.6°

ELEV
2971

U.S.
CUSTOMS

FBO

FIRE
STATION

TERMINAL

9006 X 150

019.1°

VAR 15.7° E

JANUARY 2005
ANNUAL RATE OF CHANGE
0.2°W

48°18'N

ELEV
2962

CAUTION: BE ALERT TO RUNWAY CROSSING CLEARANCES.
READBACK OF ALL RUNWAY HOLDING INSTRUCTIONS IS REQUIRED.

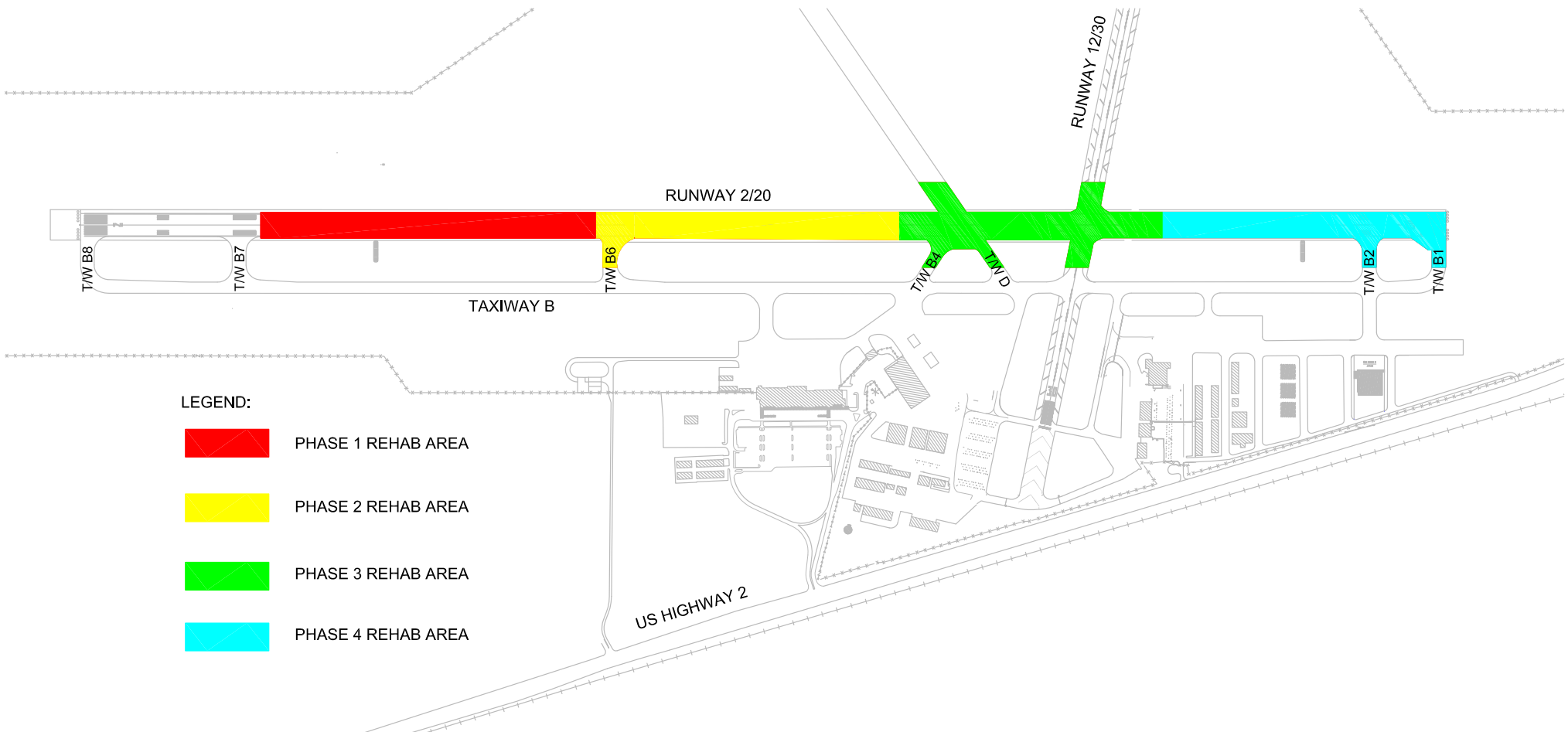
114°16'W

114°15'W

AIRPORT DIAGRAM

07354

KALISPELL, MONTANA
KALISPELL/GLACIER PARK INTL (GPI)



LEGEND:



PHASE 1 REHAB AREA



PHASE 2 REHAB AREA



PHASE 3 REHAB AREA



PHASE 4 REHAB AREA